

A complete security solution from Bosch for Ataköy Plus Mall, Istanbul



BOSCH

Invented for life

Industry:

Retail

End User:

Ataköy Plus Mall

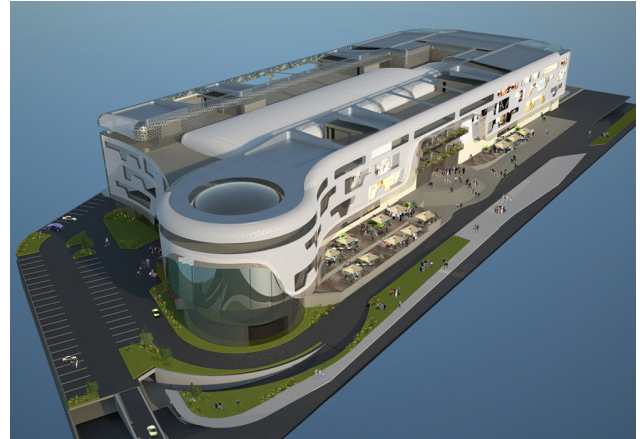
Ataköy Plus Mall opened its doors to visitors in April 2010 at Ataköy Residency Area 6th Section, has a 25,000 m2 rental area and 100,000 m2 building area in total on a 23,000 m2 parcel of land. The Ataköy Plus Mall is the candidate to be indispensable in Ataköy with its 140 stores comprising of a wide range of products from clothing to eating and drinking venues, sports stores and technological products. The Ataköy Plus Mall, launched as the most prestigious shopping center in the district with its exceptional architecture and central location close to the airport and to Marmara Coast, is aiming to entertain 8 million visitors a year.

Business Objective:

The Ataköy Plus Mall was intending, to provide its visitors a safe way to do shopping, to protect them from theft incidents and fire disasters, and while doing that, to make use of aesthetic equipment of latest technology matching with the shopping center architecture. Another point of interest was the capability to communicate with each other of security and public address systems to be installed at Ataköy Plus Mall and the easy manageability of them. Ataköy Plus Mall management has applied to Entegre Company, which is one of the business partners of Bosch Security Systems in Turkey, for the design and installation of these systems.

Solution:

Entegre, while determining the number of loops according to cable cross-sections and currents to draw of all the site elements and the module selection, also determined the number of products which may be added onto loops in the future. The core of the fire detection system is 5000 Series Modular Fire Panel. The detectors used in the system have been selected according to technical characteristics of the site. While the smoke detectors of the type FAD-0-420 were being used in clean air inlets of aspirating and pressurizing fans in parking area, it was preferred the use of beam detectors in gallery spaces, and gas detectors at the floor where the Fast Food restaurants have been located. While the site elements were being monitored by means of modules having 8 input inlets used in electricity rooms located at each floor of the building, the fire panel was backed up with the 24-loop repetitive panel, and so it was provided the system to continue operating in case of any failure. It was provided the status and location information to be tracked on 42" monitors over graphical software, by supporting the fire panel with Bosch Building Integration System. The public address system, which is vital to empty the building quickly and safely in case of fire, has been integrated with fire detection system. Entegre, preferring Bosch Plena System as the public address system, split the shopping center into 12 zones. By means of speaker placement software developed by Bosch, cable loss calculations could be made easily, and the use of which speaker at which zone has been determined. In total, over 500 speakers in different types and powers have been used. Fixed cameras were preferred in passage ways, parking area, escalators, elevator exits, service corridors and exit doors. The parking and public areas have been supported with dome cameras whereas the walking passageways have been supported



Ataköy Plus Mall

with Bosch FlexiDome VDC-445V03 fixed dome cameras. In areas such as exit and service lifts where the visitors were not permitted to pass through, Bosch LTC 0440 cameras have been preferred, and outside of mall Bosch LTC 0455 cameras with day/night feature have been used. In the system Bosch UML Series 17",19",20" 26 of LCD monitors,13 DVR MR with 500GB capacity and 200 cameras have been used. While the exit doors opening to fire escapes existing at the floors of shopping center in general and the electric rooms having been tracked by means of magnetic contacts, the fire exit doors have been secured against unauthorized entry and exits by means of magnetic strips. These locations are being tracked by means of security cameras. The service lifts existing on -3 and -2 parking place floors not to be used by visitors, elevator call buttons have been cancelled, and approach type card reader application has been installed in and out of the elevators. Emergency exit buttons have been installed at all places where magnetic holders were located, and so, in case of any emergency situation the possibility to exit out has been provided.

Result:

The combination of Bosch fire detection, public address and evacuation, video surveillance and access control systems has been an excellent solution for the shopping center due to its providing comprehensive security measures to its guests and staff, besides all the products used in the project being compatible with the building architecture and aesthetics. It has been provided the system faults and messages to be controlled over a single software by integrating all the systems to Bosch Building Integration System.

Installed by:

Entegre Elektronik Güvenlik Sistemleri Ltd.Şti.
Marmara Sanayi Sitesi D-Blok No:74
34306 İkitelli İstanbul / Turkey
www.entegre.com.tr

Bosch Security Systems
Ahi Evran Cad. No:15 J-M Atacenter İş Mrk.
34398 Maslak İstanbul/Turkey
Tel: 0 212 367 18 50
www.tr.boschsecurity.com